

LX

Wide Stock Range Press

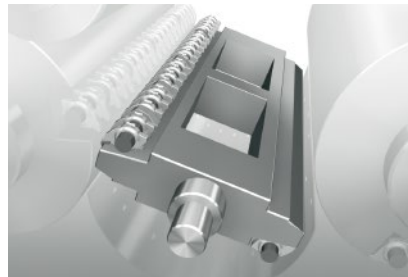
Featuring air management technology for smooth sheet transfer and skeleton cylinders that prevent scratching and smearing by keeping the printed sheets away from contact with cylinders, these presses can handle a wide range of paper stock from 0.04 mm thin paper to 1.0 mm heavy board.



1020LX-6/1060LX-6+CC+LD

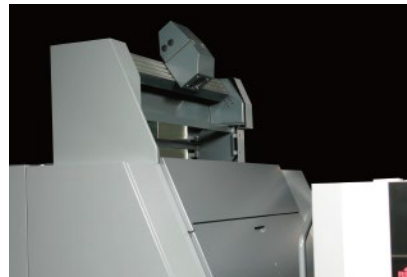


1020LX-6/1060LX-6+DU+CC+2LD



Skeleton transfer cylinder

These cylinders have no cylinder surface, transferring sheets by use of grippers alone. With no cylinder surface to come in contact with, outstanding printing quality is achieved even with full-page images.

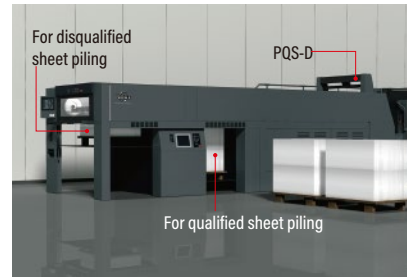


PQS-D (I+C+R) print quality control system*

A CCD camera installed on the press captures images of the printed sheets for inline inspection of printing quality. In addition to preventing paper waste and enhancing quality assurance, the PQS-D helps to automate printing tasks.

* The PQS-D comprises a quality inspection (I) as the main feature, and a color density tracking function (C) and an automatic register adjustment function (R) as options.

* Requires Press Information Display, PPC Server III and PDS-E Spectro-Drive.



Double delivery*

The inline printing quality control system PQS-D inspects sheets during printing and automatically discharges the delivery for disqualified printed sheet piling, eliminating any need to sort out rejects after printing is finished.

* Option for LX type (paper thickness over 0.2 mm)

Specifications

	LX (Wide stock range press)	
	1020 model	1060 model
Max. printing speed*	16,200 S.P.H.	
Max. sheet size	740 x 1,020 mm (29.13" x 40.16")	750 x 1,060 mm (29.53" x 41.73")
Min. sheet size	360 x 540 mm (14.17" x 21.26")	
Max. printing area	730 x 1,020 mm (28.74" x 40.16")	740 x 1,050 mm (29.13" x 41.34")
Sheet thickness	0.04 - 1.0 mm (0.002" - 0.039")	

* Local conditions, ink and printing plate types, and printing quality requirements will affect the maximum printing speed.

RMGT RYOBİ MHI Graphic Technology Ltd.

International Sales and Marketing Department
 5-2-8 TOSHIMA, KITA-KU, TOKYO 114-8518, JAPAN
 TEL. +81-3-3927-5238, FAX. +81-3-3927-5240
<https://www.ryobi-group.co.jp/graphic/>

Cat. No. RMGT 10 Jan. '22E01
 Order No. HK300 01 10



NEW

RMGT 10

1,020 mm format offset press 1020 model
 1,060 mm format offset press 1060 model

LX (Wide Stock Range Press)

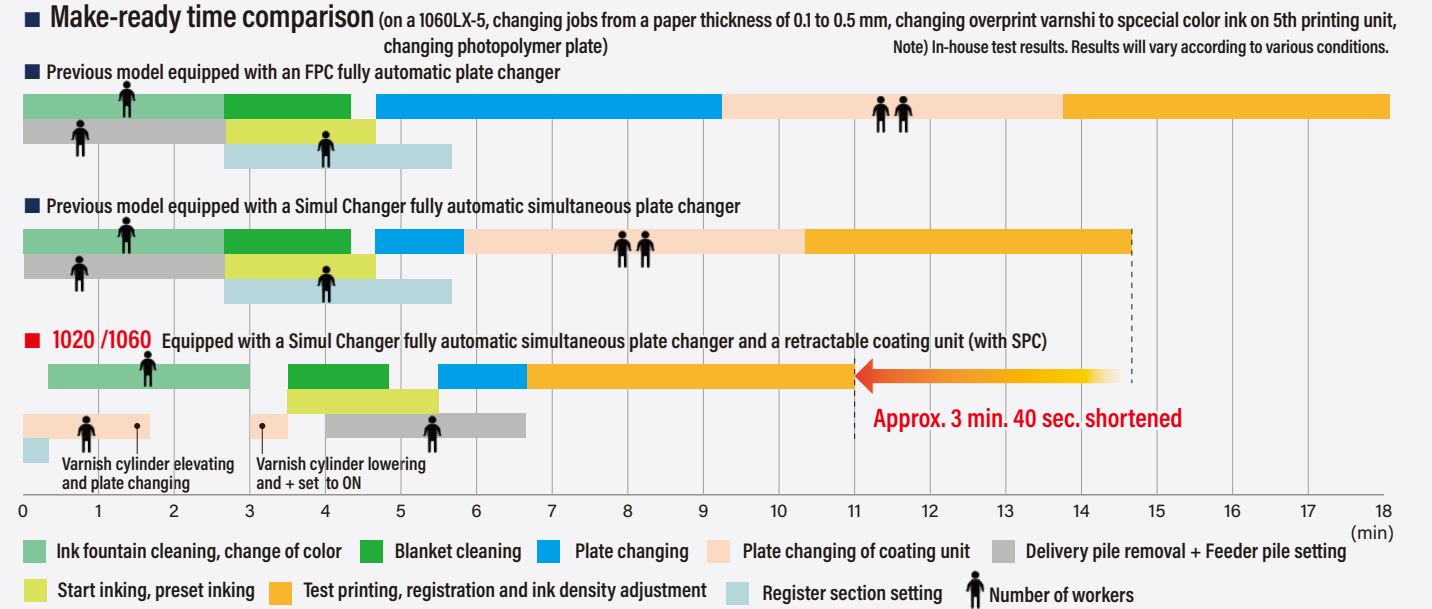


1060LX-6+DU+CC+2LD
 (1,060 mm format wide stock range press)

Dramatically improved productivity for high value-added package printing.

Assist Your Potential (with Technological Expertise and Constant Innovation) RMGT pursues this goal through press automation and laborsaving technology. Giving shape to this concept, the cutting-edge RMGT 10 series now delivers even higher productivity for package printing. Upgraded paper feed and delivery performance markedly improve package printing capacity. Enhanced preset functions for job change-over, a new coating unit with faster varnish preparation, a shorter blanket cleaning time, and other improvements also greatly shorten make-ready time. The lineup includes new 1060 models capable of handling 1,060 mm wide paper (printing width: 1,050 mm), an advantage for multi-up package printing. The RMGT 10 series can also handle a wide variety of different package printing varnishes.

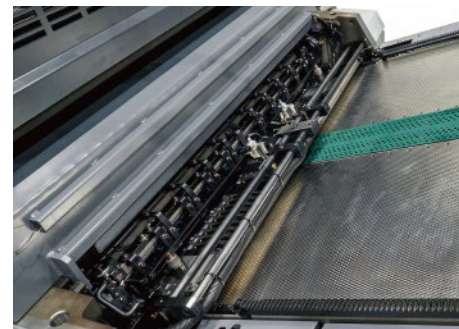
for PACKAGE PRINTING



High-speed package printing* **new**

The delivery section features a newly developed polygon type vacuum wheel for heavy stock. The register section is equipped with a side lay push-pull mechanism that simultaneously operates the operation and drive side side lays to increase the side lay pulling force, with a front lay swing paper guide that ensures reliable heavy stock feeding. The result is faster package printing.

* Option for LX type

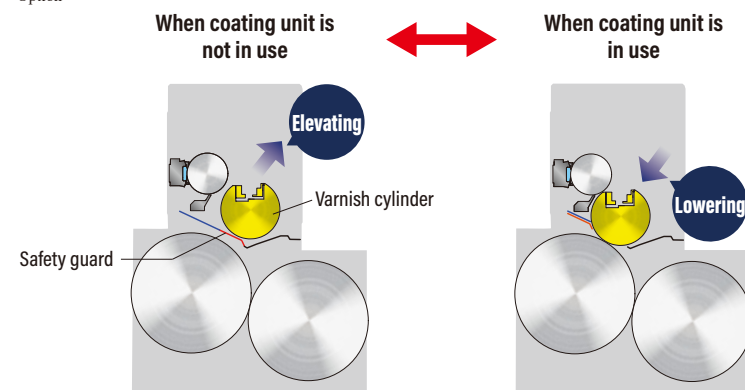


Register section

Retractable coating unit* enables preparation of coating varnish during printing **new**

The coating unit is retractable, so the varnish cylinder can be swung upward when not in use, preventing damage to the printed sheets. An independent drive* for the coating cylinder enables preparations for the next job, such as cleaning the varnish cylinder and changing the plates, to be performed while printing, and installing an SPC semiautomatic plate changer* enables faster plate mounting on the varnish cylinder.

* Option



Retractable coating unit

Shorter make-ready time for changing paper* **new**

The preset function at the infeed section is further enhanced to adjust to the paper thickness. The leaf spring position preset function at the register section automatically switches from thin to heavy stock feeding speedily. The heavy stock guide rollers also automatically adjust the height to accommodate heavy stock feeding, shortening make-ready time when changing paper.

* Option for LX type

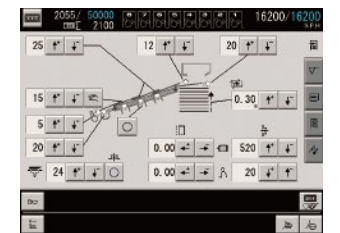
Shorter blanket cleaning time* **new**

By optimizing the cleaning cycle, the time required for blanket cleaning is reduced by approximately 20 seconds compared with previous models while maintaining the same high cleaning performance. This markedly reduces the make-ready time for diversified short-run work requiring frequent color changes or job changes.

* When using RMGT blanket cleaning device

Improved operability and accessibility for feeder and delivery sections **new**

The feeder and delivery section operation panels feature a touchscreen monitor. The feeder and delivery section operation panels, control buttons and covers have all been ergonomically redesigned, improving both operability and accessibility.

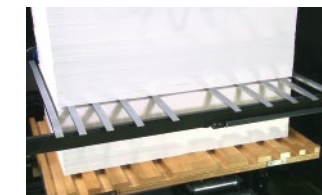


Feeder touchscreen monitor

Automatic nonstop feeder*/ Delivery shutter*

The automatic nonstop feeder and delivery shutter enable to print long runs of heavy stock without the need for stopping the press. These devices eliminate downtime and reduce sheet waste during pile loading and removal and improve press productivity.

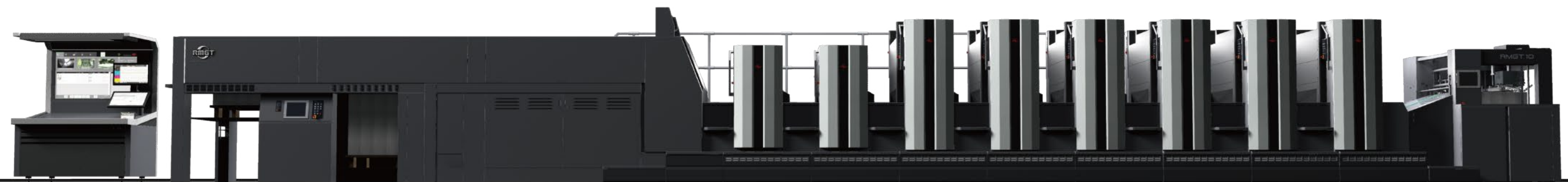
* Option on the LX model (paper thickness over 0.2 mm)



Automatic nonstop feeder



Delivery shutter



1060LX-6+DU+CC+2LD (1,060 mm format wide stock range press)